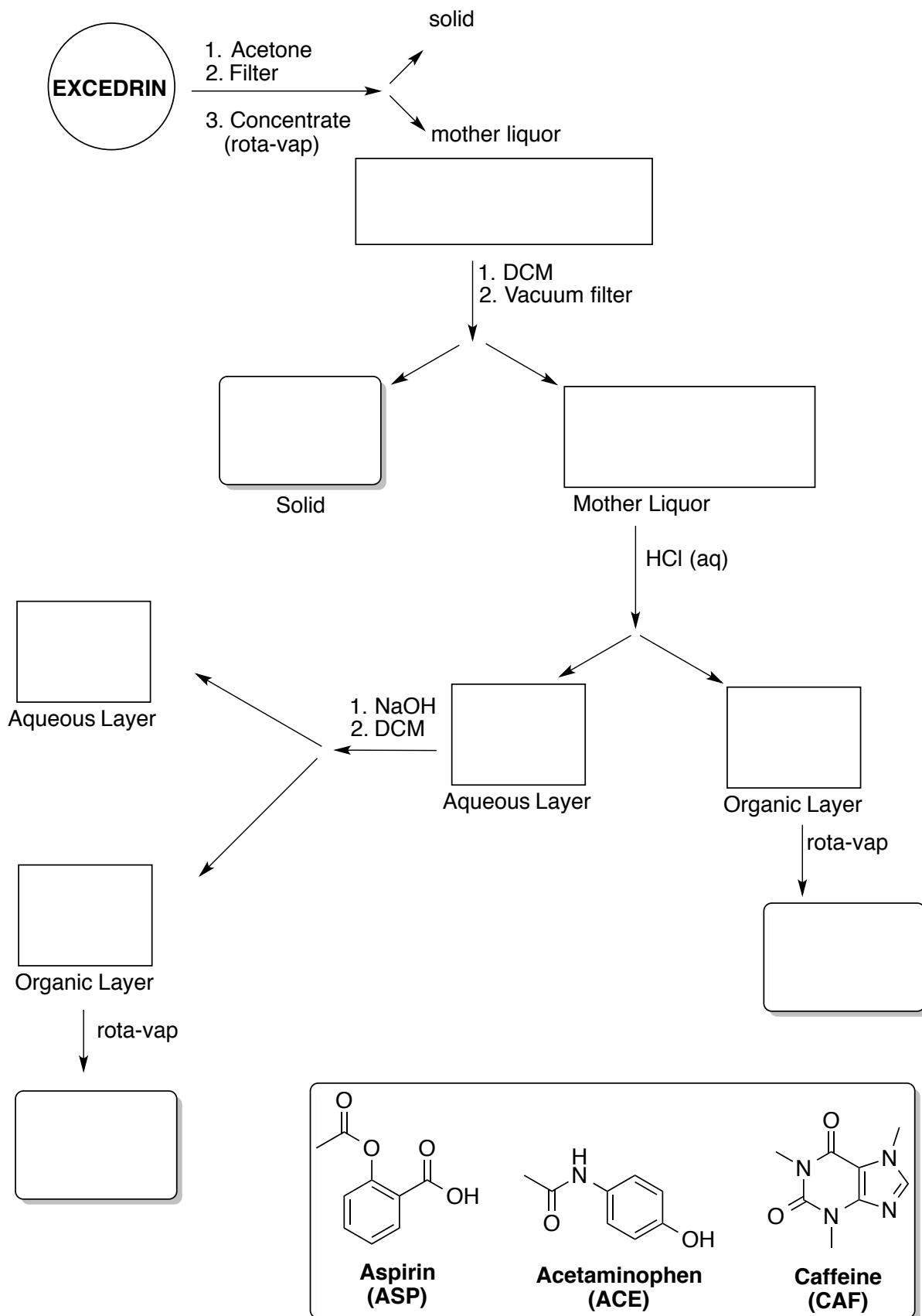
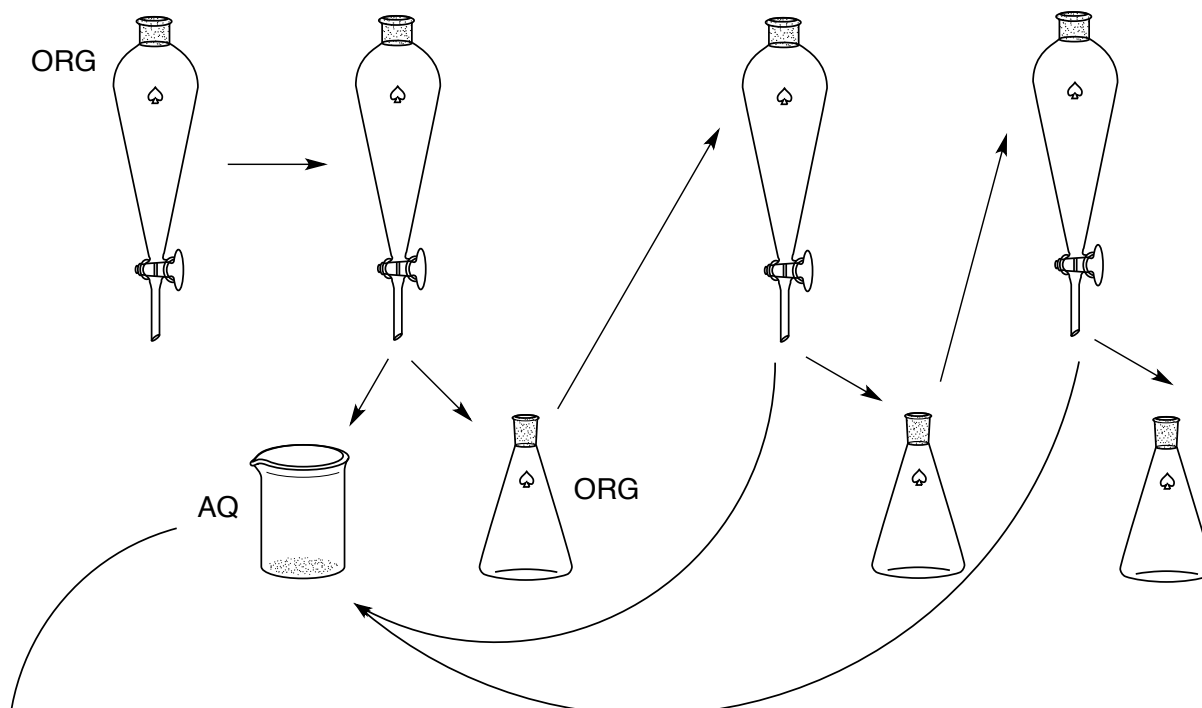


Flow Chart: Isolation & Acid-Base Extraction of Excedrin Components



Acidic Extraction of Caffeine: "extract the organic layer with 3 x 7 mL of 5% HCl"

1 separatory funnel, 1 beaker, 1 erlenmeyer flask

**Neutralization and Isolation of Caffeine:***"extract the aqueous layer with 3 x 10 mL of DCM"*

1 separatory funnel, 2 erlenmeyer flasks

